

# WaterHog® Diamond Mats

## Scraper/Wiper Mats • Indoor/Outdoor

WaterHog Diamond mats are durable, stain-resistant mats with a unique bi-level design that traps dirt and moisture, keeping your floors clean, dry, and safe. Rather than the traditional WaterHog “waffle” pattern, these mats feature an attractive diamond pattern.

- **Clean & Dry** – Bi-level surface effectively scrapes dirt and moisture from shoes, trapping it beneath shoe level to prevent tracking; water dam border holds moisture keeping it off your floors (WaterHog mats can hold up to 1.5 gallons of water per square yard)
- **Durable** – Reinforced rubber nubs prevent pile from crushing and extend the performance life of the mat
- **Fade & Stain Resistant** – Solution-dyed PET fabric (24 ounces per square yard) is resistant to staining, dries quickly, and will not fade or rot
- **Safe** – Beveled edges provide a safe transition from floor to mat; certified high-traction by the National Floor Safety Institute (NFSI)
- **Eco-Friendly** – SBR rubber backing contains 20% post-consumer recycled rubber from car tires; PET surface is made from 100% post-consumer recycled plastic bottles
- Available in 19 colors with choice of classic rubber border or fashion fabric border
- Feature 78-mil SBR rubber with universal cleated backing or smooth backing; available with optional Anchor Safe® nitrile rubber backing on classic border mat only



Aquamarine\*



Bluestone



Bordeaux



Camel



Charcoal



Dark Brown



Evergreen



Gold\*



Light Green\*



Medium Blue



Medium Brown



Medium Grey



Navy



Orange\*



Purple\*



Red/Black



Solid Red\*



White\*



Yellow\*

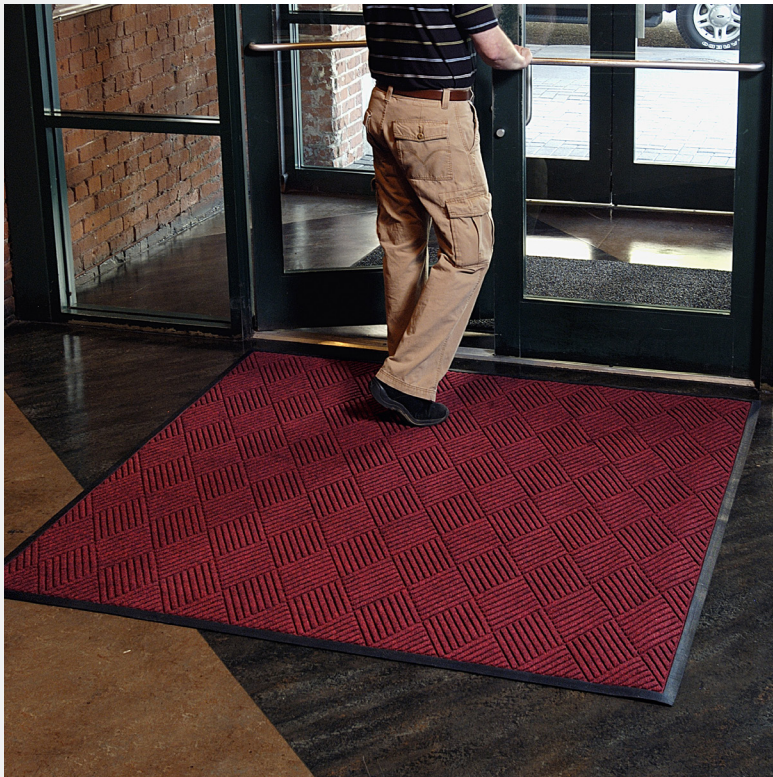
\*These colors are available in 3' and 4' widths only.

Colors may vary due to inconsistencies of various display monitors or printers (if you're viewing a printed version of this document). Color images are intended to be used as a guide only.



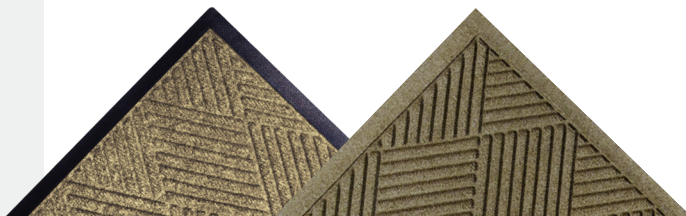
# WaterHog® Diamond Mats

Scraper/Wiper Mats • Indoor/Outdoor



Classic Rubber Border

Fashion Fabric Border



**Commercial Mats  
and Rubber.com**  
A Division of DB Industrial Supply

1-800-810-7847

## Product No. 208 (classic border), 221 (fashion border) 3/8" thickness

Size (ft.)	Size (in.)	Shipping Weight
2' x 3'	24" x 35"	6 lbs.
3' x 4'	35" x 46"	10 lbs.
3' x 5'	35" x 59"	13 lbs.
3' x 6'	35" x 70"	15 lbs.
3' x 8.4'	35" x 101"	19 lbs.
3' x 10'	35" x 118"	21 lbs.
3' x 12.2'	35" x 147"	25 lbs.
3' x 16'	35" x 193"	33 lbs.
3' x 20'	35" x 239"	41 lbs.
4' x 6'	45" x 70"	20 lbs.
4' x 8.4'	45" x 101"	24 lbs.
4' x 10'	45" x 118"	28 lbs.
4' x 12.2'	45" x 147"	32 lbs.
4' x 16'	45" x 193"	42 lbs.
4' x 20'	45" x 239"	52 lbs.
6' x 6'	71" x 71"	25 lbs.
6' x 8.4'	71" x 101"	35 lbs.
6' x 12.2'	71" x 147"	50 lbs.
6' x 16'	71" x 193"	66 lbs.
6' x 20'	71" x 239"	81 lbs.

### Special sizes listed below.

3' x 23.8'	35" x 281"	41 lbs.
3' x 27'	35" x 326"	55 lbs.
3' x 31'	35" x 371"	62 lbs.
3' x 35'	35" x 416"	70 lbs.
3' x 38.5'	35" x 462"	77 lbs.
3' x 42'	35" x 507"	85 lbs.
3' x 46'	35" x 552"	92 lbs.
3' x 50'	35" x 598"	100 lbs.
3' x 53.5'	35" x 643"	107 lbs.
3' x 57'	35" x 688"	115 lbs.
3' x 61'	35" x 733"	122 lbs.
4' x 23.8'	45" x 281"	61 lbs.
4' x 27'	45" x 326"	70 lbs.
4' x 31'	45" x 371"	80 lbs.
4' x 35'	45" x 416"	89 lbs.
4' x 38.5'	45" x 462"	99 lbs.
4' x 42'	45" x 507"	109 lbs.
4' x 46'	45" x 552"	118 lbs.
4' x 50'	45" x 598"	128 lbs.
4' x 53.5'	45" x 643"	138 lbs.
4' x 57'	45" x 688"	147 lbs.
4' x 61'	45" x 733"	157 lbs.
6' x 23.8'	71" x 281"	95 lbs.
6' x 27'	71" x 326"	110 lbs.
6' x 31'	71" x 371"	125 lbs.
6' x 35'	71" x 416"	140 lbs.
6' x 38.5'	71" x 462"	156 lbs.
6' x 42'	71" x 507"	171 lbs.
6' x 46'	71" x 552"	186 lbs.
6' x 50'	71" x 598"	202 lbs.
6' x 53.5'	71" x 643"	217 lbs.
6' x 57'	71" x 688"	232 lbs.
6' x 61'	71" x 733"	247 lbs.

**Note:** Mats up to 40' are available with smooth and universal cleated backing options. Mats over 40' are available in smooth backing only. Anchor Safe backing (100 mil nitrile rubber) is available up to 20' and with classic rubber border only.

Mat sizes are approximate as rubber shrinks and expands in conjunction with temperature and time. Tolerable manufacturing size variance is 3-5%.